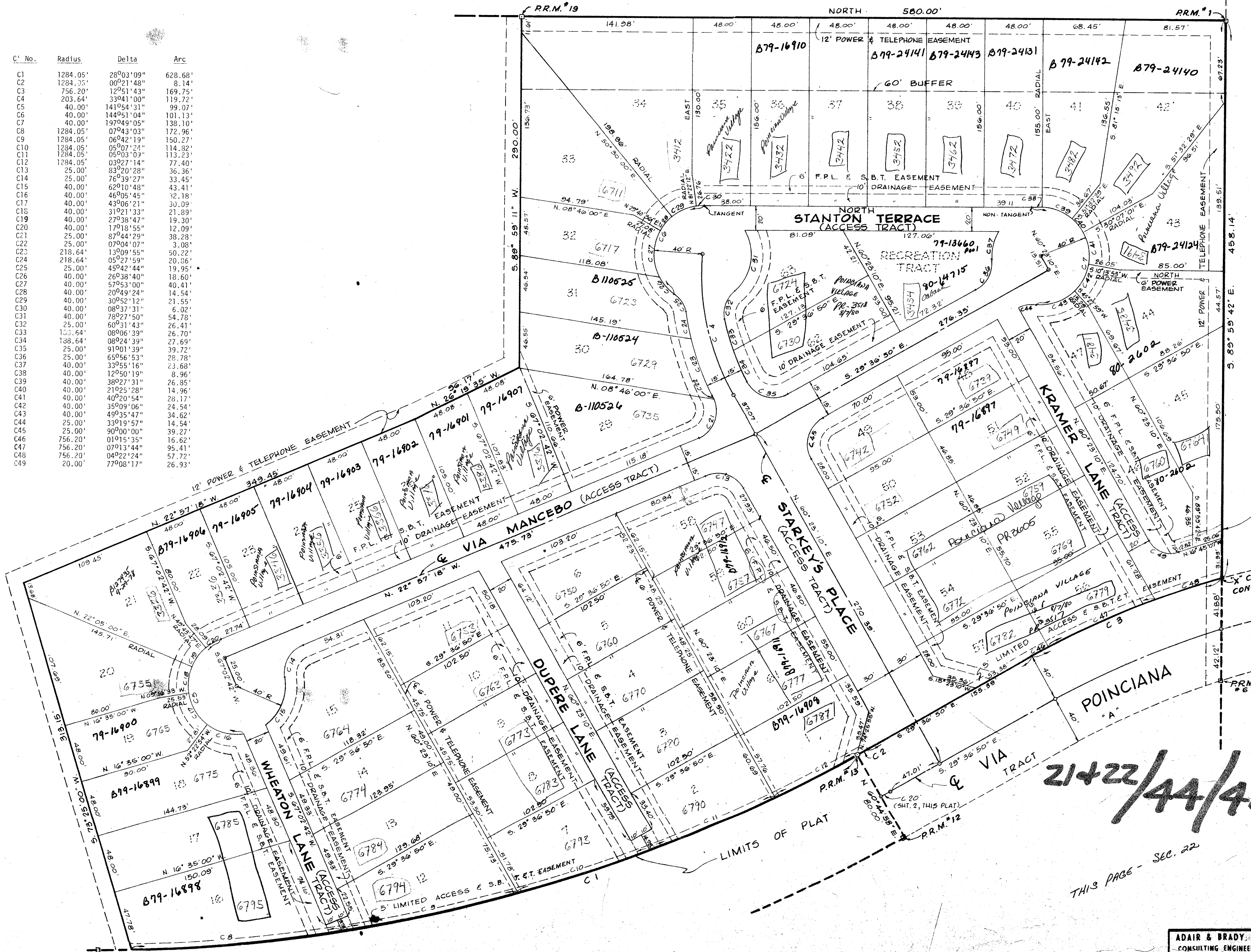


POINCIANA PLACE PHASE II-A

56

C. No.	Radius	Delta	Arc
C1	1284.05'	28°03'09"	628.68'
C2	1284.05'	00°21'48"	8.14'
C3	756.20'	12°51'43"	169.75'
C4	203.64'	33°41'00"	119.72'
C5	40.00'	141°54'31"	99.07'
C6	40.00'	144°51'04"	101.13'
C7	40.00'	197°49'05"	138.10'
C8	1284.05'	07°43'03"	172.96'
C9	1284.05'	06°42'19"	150.27'
C10	1284.05'	05°07'21"	114.82'
C11	1284.05'	05°03'03"	113.23'
C12	1284.05'	03°27'14"	77.40'
C13	25.00'	83°20'28"	36.36'
C14	25.00'	76°39'27"	33.45'
C15	40.00'	62°10'48"	43.41'
C16	40.00'	46°05'45"	32.18'
C17	40.00'	43°06'21"	30.09'
C18	40.00'	31°21'33"	21.89'
C19	40.00'	27°38'47"	19.30'
C20	40.00'	17°18'55"	12.09'
C21	25.00'	87°44'29"	38.28'
C22	25.00'	07°04'07"	3.08'
C23	218.64'	13°09'55"	50.22'
C24	218.64'	05°27'59"	20.06'
C25	25.00'	45°42'44"	19.95'
C26	40.00'	26°34'40"	18.60'
C27	40.00'	57°53'00"	40.41'
C28	40.00'	20°49'24"	14.54'
C29	40.00'	30°52'12"	21.55'
C30	40.00'	08°37'31"	6.02'
C31	40.00'	78°27'50"	54.78'
C32	25.00'	60°31'43"	26.41'
C33	153.64'	08°06'39"	26.70'
C34	198.64'	08°24'39"	27.69'
C35	25.00'	91°01'39"	39.72'
C36	25.00'	65°56'53"	28.78'
C37	40.00'	33°55'16"	23.68'
C38	40.00'	12°50'19"	8.96'
C39	40.00'	38°27'31"	26.85'
C40	40.00'	21°25'28"	14.96'
C41	40.00'	40°20'54"	28.17'
C42	40.00'	35°09'06"	24.54'
C43	40.00'	49°35'47"	34.62'
C44	25.00'	33°19'57"	14.54'
C45	25.00'	90°00'00"	39.27'
C46	756.20'	01°15'35"	16.62'
C47	756.20'	07°13'44"	95.41'
C48	756.20'	04°22'24"	57.72'
C49	20.00'	77°08'17"	26.93'



48 + 33

21+22/44/42 0299-304

THIS PAGE - Sec. 22

35/56

POINCIANA PLACE PHASE II-A

ADAIR & BRADY, INC. CONSULTING ENGINEERS & LAND SURVEYORS <small>LAKE WORTH WEST PALM BEACH ORLANDO</small>			RECORD PLAT POINCIANA PLACE PHASE II-A
<small>DR. WILSON</small> <small>CHAD J. L. K.</small>	<small>SCALE</small> 40' <small>DATE</small> 2-78 <small>JOB NO.</small> 2542		